



**DIAMOND
SHIPPING
SERVICES LLC**

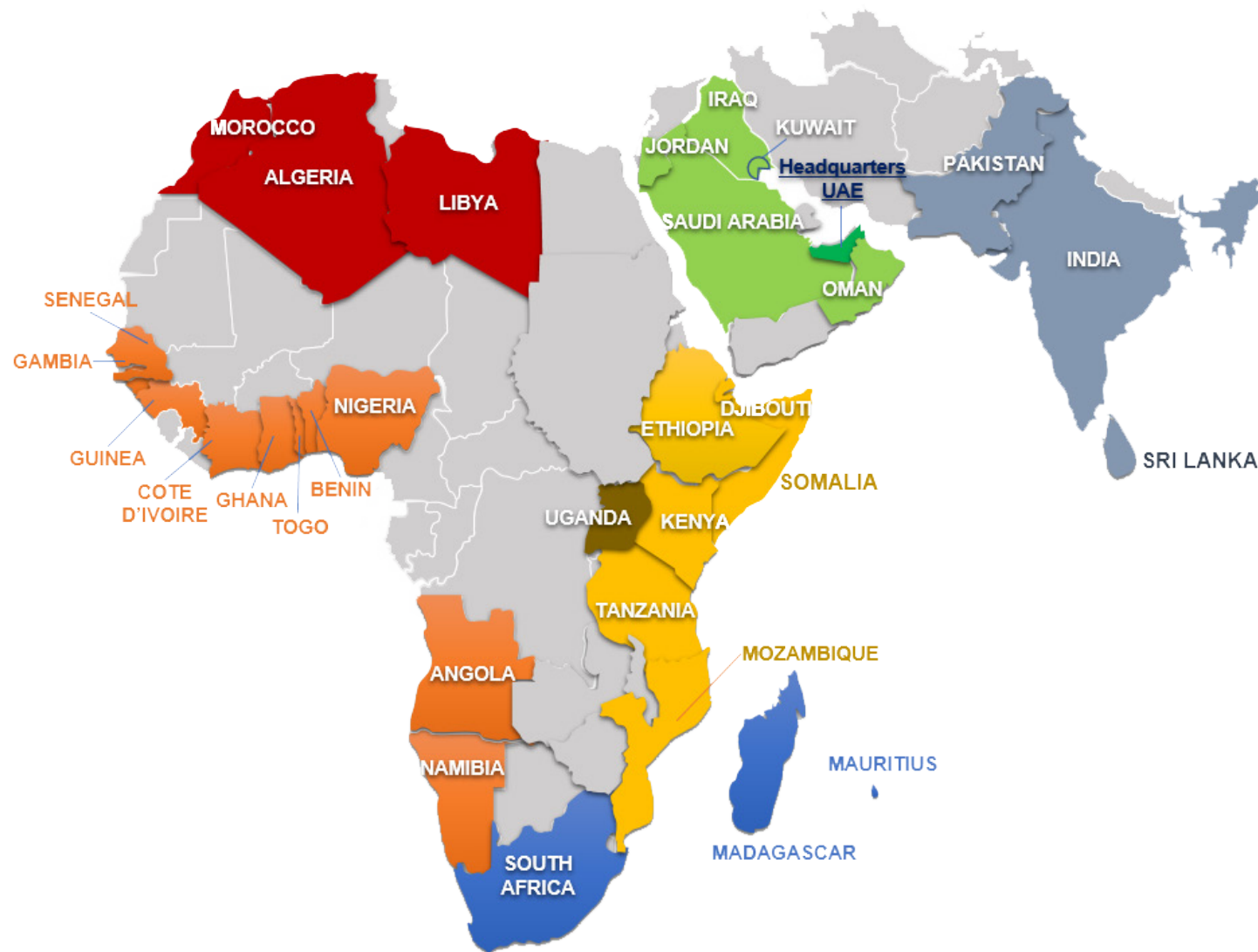
REGION'S SHIPPING SPECIALIST

Middle East • Africa • Indian Subcontinent



Diamond Network. Worldwide

32 Countries · 2 Continents · 7 Regions

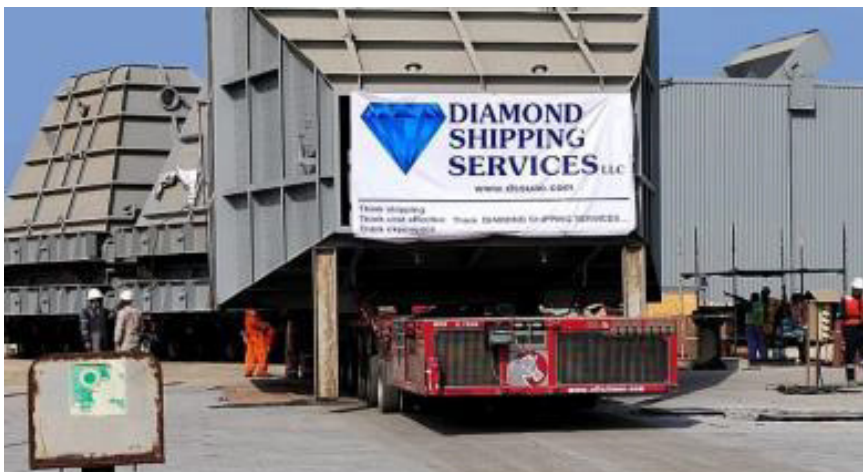


DIAMOND SHIPPING SERVICES

We go beyond moving your cargo We move your business

Since its inception in 1993, **Diamond shipping service** has been one of the most trusted last mile logistics solution providers in the Gulf region. With our sole focus on unparalleled customer service, we offer optimized and improved supply chain solutions that include cost effective transport solutions, Freight forwarding, Groupage services, Warehousing distribution, and specialized project cargo handling.

Diamond shipping service is owned completely by the **Sharaf Group**, an international group spread across the globe with diverse business interests. With **over 29 years** of excellence in the field, our operations and network extend across Africa, the Middle East, and the Indian sub continent. We have established a reputation for offering world class logistics and supply management solutions.



OUR HEADQUARTERS

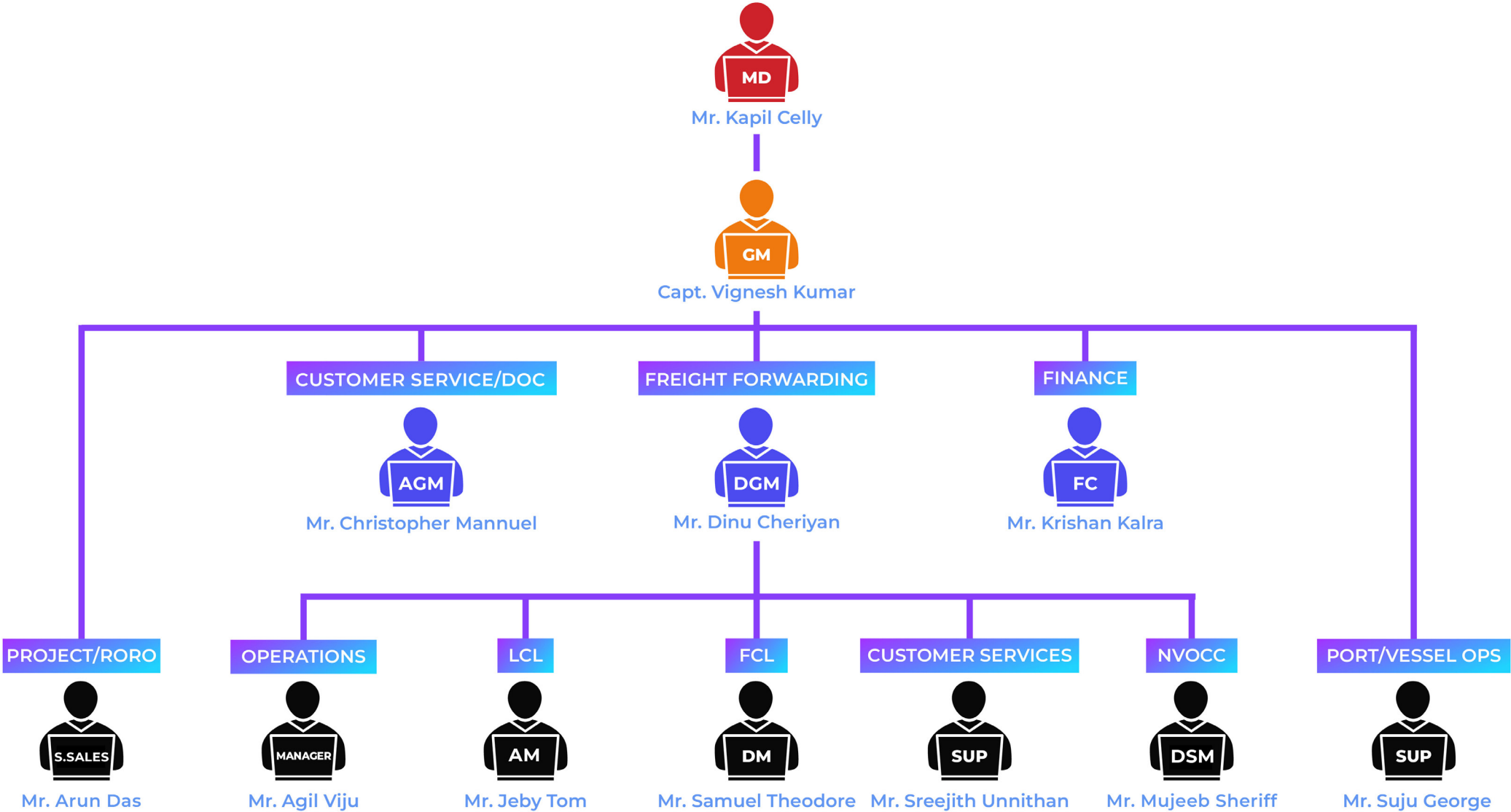
1st Floor, Sharaf Building
Al Mina Road, Dubai, UAE.
Tel: +971 4 3520111
info@dssuae.com



MEMBERSHIPS & CERTIFICATION



ORGANISATION CHART



OUR SERVICES



PORT AGENCY



**FREIGHT
FORWARDING
(SEA FREIGHT)**



**FREIGHT
FORWARDING
(AIR FREIGHT)**



**CONSOLIDATION
SERVICE**



**RO-RO AND
BREAKBULK**



**LOGISTICS
SERVICES -
WH/CC/TPT**

Port Agency

Local Expertise. Global outlook

- RO RO VESSELS
- BULK/PROJECT VESSEL
- CONTAINER VESSELS
- TANKER VESSELS
- OWNER'S PROTECTIVE AGENCY
- NVOCC AGENCY



Marine services

We assure quality and safety for both people and vessels because our technical management extends across a diverse fleet of vessels..

Hub Agency

We act as a single point of contact for owners to coordinate both operationally and commercially. We oversee and manage everything from financial transactions to checking port logs and documentation.

Husbandry services

We fit in perfectly with a vessel for port interface which is crucial for the smooth functioning of the vessels call, involving major maintenance, bunkering, supplies, crew change etc. and to take care of the vessel's need in a professional manner.

Freight Management

End to End Logistics

- **SEA FREIGHT**
 - Auto Logistics
 - Breakbulk
 - Projects & Heavy Lifts
- **LCL CONSOLIDATION**
- **AIR FREIGHT**
- **CLEARANCE**
- **WAREHOUSING**
- **TRANSPORTATION**



SEA FREIGHT

Multi modal Network Cost Effective solution

- We deliver reliable and cost effective ocean freight services which include multi modal transport and covers end to end services
- Full Container Load and Less Container Load services
- We have the expertise to handle all type of cargo and specialize in auto logistics
- Our strategic solutions are extensive across all major trade lanes



LCL CONSOLIDATION

Efficient service. Economical Pricing

- Imports from multiple ports in Far East, India and Europe
- We offer regular weekly export consolidation services with fixed day box closures to 15 destinations in GCC, Red Sea and EAF
- We maintain high levels of coordination, efficiency and transparency when handling shipments
- We endeavor achieve safe and error free operations



Air Freight

Operational Efficiency. Prompt Delivery

- We have strong service from Europe and Far East
- We provide smooth and efficient door to door service include clearance and delivery
- Comprehensive and optimal service to ensure on time delivery of products
- We also manage consolidation of air cargo

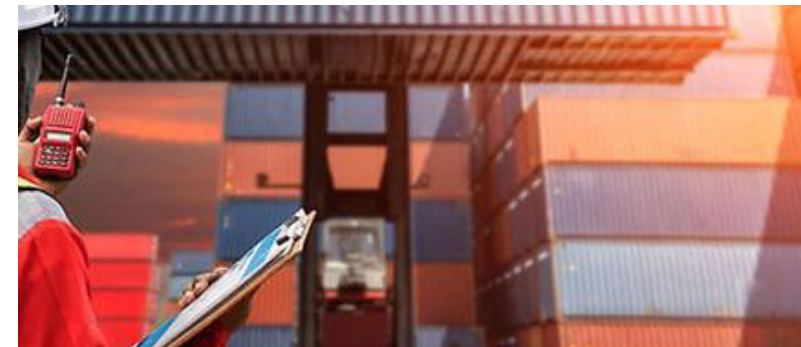


CUSTOM CLEARANCE

Trade Compliance. Smooth Clearance

- Well experienced and efficient team to handle customs activities smoothly
- Well versed in local rules and regulations to ensure trade compliance
- We deal with diverse cargoes for both import and export clearance
- Updated IT system to support interface and documentation recording process

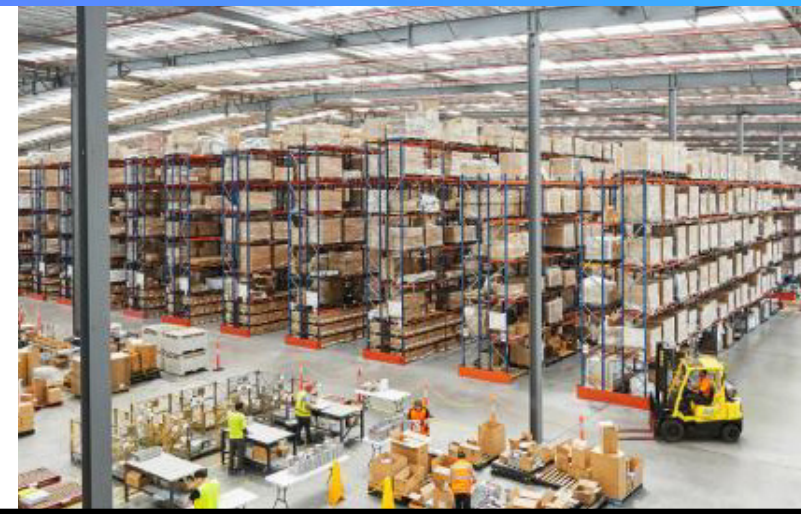
جمارك دبي
Dubai Customs



WAREHOUSING

World class Infrastructure . Integrated supply chain

- We provide integrated 3PL service using our in house warehouse facility
- Our warehouse is located at Jebel Ali Free zone with an area of 100,000 sq m
- Area includes covered, open and cold storage warehousing facilities
- We provide a variety of services including cross stuffing, re-packing and labeling, bonded facility etc.



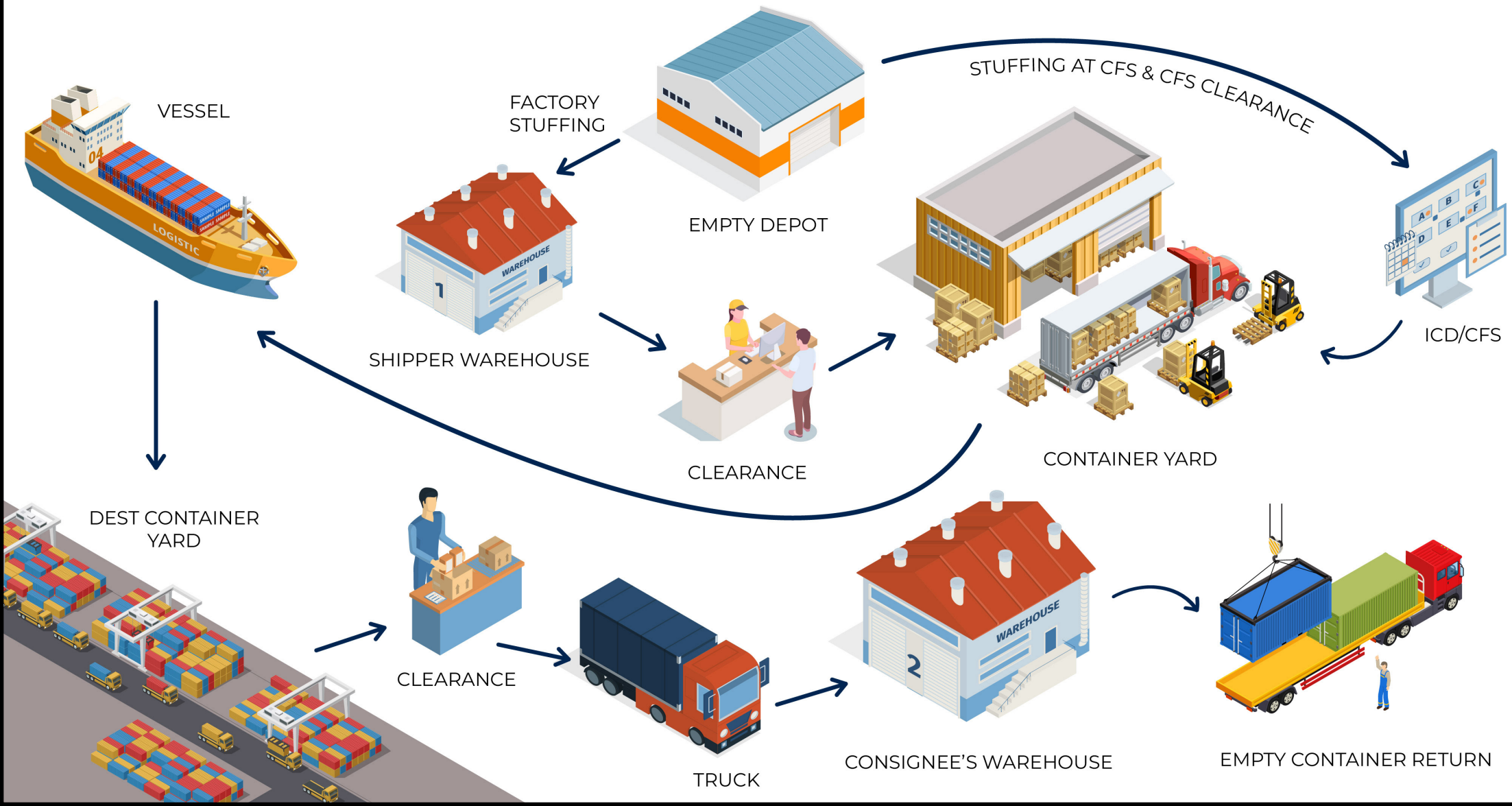
Ro Ro, Breakbulk and Projects

Cargo Delivered Anytime Anywhere

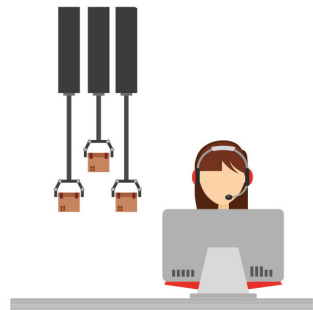
- We are the regions specialist handling various types of Ro Ro shipments
- Shipments include passenger cars, High & Heavy vehicles, mafi and static cargoes
- We have expertise in heavy lift and project cargo handling with customized solutions
- We represent major carriers such as EUKOR Car Carriers and HMM Break bulk in the region



CONTAINER MOVEMENT PROCESS FLOW



RO-RO/BB MOVEMENT PROCESS FLOW



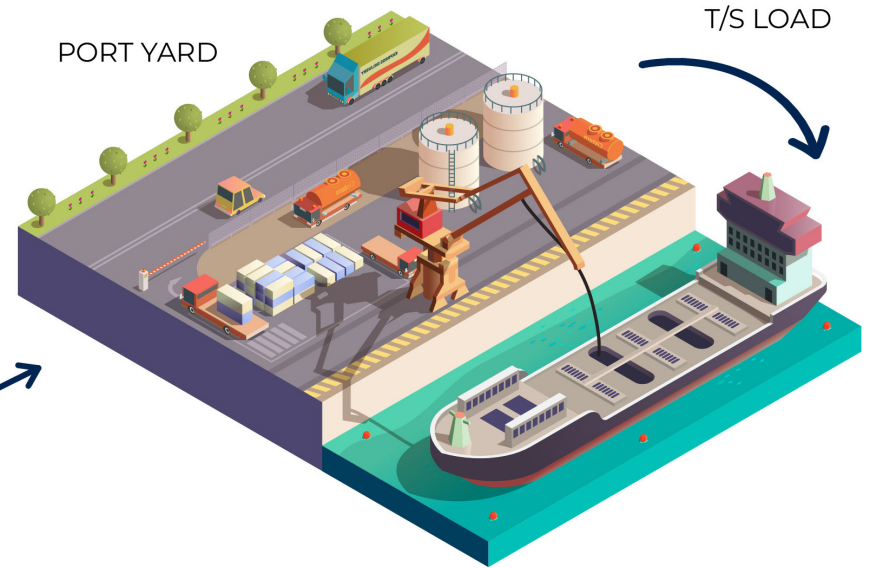
AGENT



ACCEPTANCE TO CUSTOMER



CLEARANCE



DEST. PORT YARD



CLEARANCE



CONSIGNEE WAREHOUSE

FREIGHT TAX

- VAT is classified as Standard Rate at 5%, ZERO rate and Exempt, N/A ,O/S
- Freight activity is Zero Rated.
- All Disbursements are charged to Principal, VAT is applicable depending on the service provided.
- An agent remuneration from principal does not attract any VAT
- Corporate tax of 9% on profit, will be implemented from 1st July 2023



Our Key Strengths in Business

- **Long standing company with almost 30 years of experience**
 - **Reputed company as being a part of Sharaf group**
 - **Well connected network**
 - **Strong financial background**

We are your reliable and stable partner

THANK YOU !